

Stanborough School

ART DEPARTMENT

A LEVEL ART AND DESIGN

Welcome to your AS A level Art course. Over the next two years you will have the opportunity to develop your artistic skills using a wide range of media and techniques. You will need to be self-motivated and have an open mind, this will allow your work to develop in exciting ways.

“Instead of thinking outside of the box, get rid of the box” –Deepak Chopra-

ASSESSMENT

Component 1: Personal Investigation

90 Marks (18 are for personal study)

60% of A level

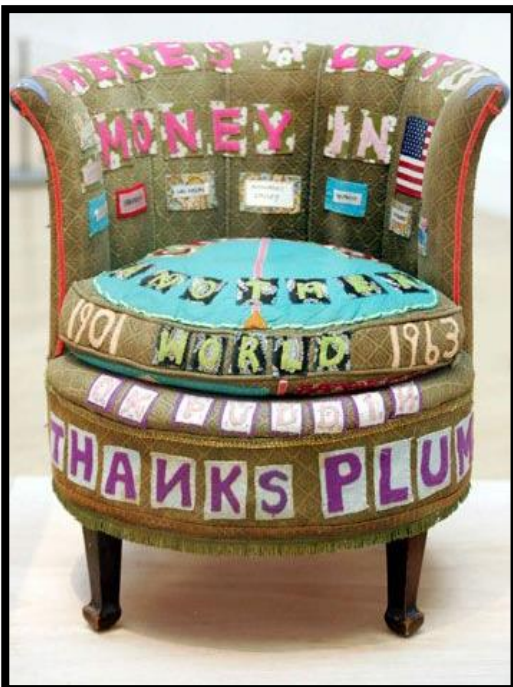
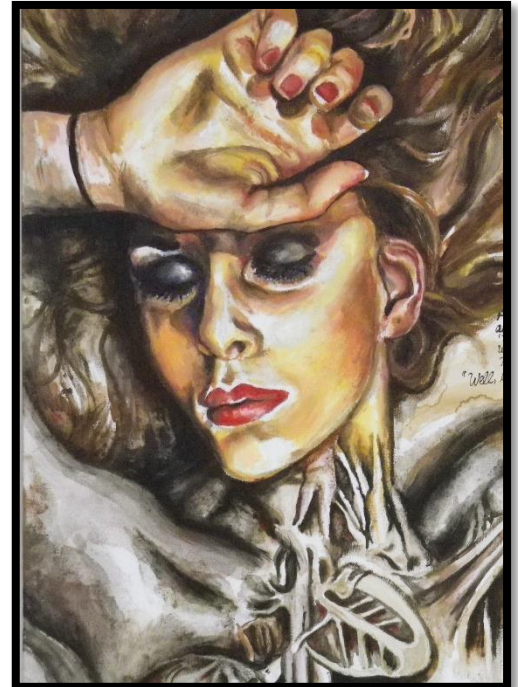
You will undertake a practical investigation into an ideas, theme, issue or concept. This practical work will be identified independently based upon a starting point and will lead to an end outcome. The investigation will demonstrate your ability to develop a cohesive line of argument whilst evidencing your practical skill. Your work is presented in a sketchbook or board format showing a wide range of techniques explored through appropriate media and materials.

Component 2: Externally set assignment

72 Marks

15 hour exam – 40% of A level

The externally set assignment is a prescribed theme set by the exam board on the 1st February which will take approx. 8 weeks to complete leading up to the 15 hour exam split over 3 days.



EXPECTATIONS

By opting to do A level Art you are making a commitment. We are committed to providing you with the best opportunities and in return, our expectation is that you will do your best to work effectively to reach your potential. You will experience greater freedom as an A Level student but there are some ground rules and expectations which must be followed:

Deadlines & Homework

Internal deadlines for your coursework and exam work must be met. Deadlines will be clearly communicated and your priorities among other subjects must be balanced. Homework will be set weekly and you are expected to complete on time and to the best of your ability.

Studio Space

Use of the studio is expected outside of lesson time, during your free periods, after school and lunchtime for a minimum of 3 hours per week.

Respect for equipment

As independent learners, it is expected that you tidy up effectively at the end of each session and ensure that you have the correct equipment with you for every class.